

Perkins Specialized Transportation Contracting



1-877-PERKINS
www.perkinsonline.com

Highway Heavy Haul

New Ethanol Plant Requires Huge Shipment

Perkins Delivers First of Many New Dryers

The first of several large Rotary Dryers was successfully delivered by **Perkins Specialized Transportation Contracting** from a fabrication shop in WI to a new Ethanol Plant located in the corn country of rural IA. It took months of planning and route surveys, dozens of hauling permits and some very specialized highway transport equipment to deliver the 73' long drum, which was nearly 14' wide.



The 257,000-pound Rotary Dryer arrives on site at a new Ethanol Plant site in IA.

The Perkins' Transporter was nearly 235' long, with 108 wheels total. Two large road tractors with over 1100 hp combined were used to make the 373-mile trip thru WI and IA.

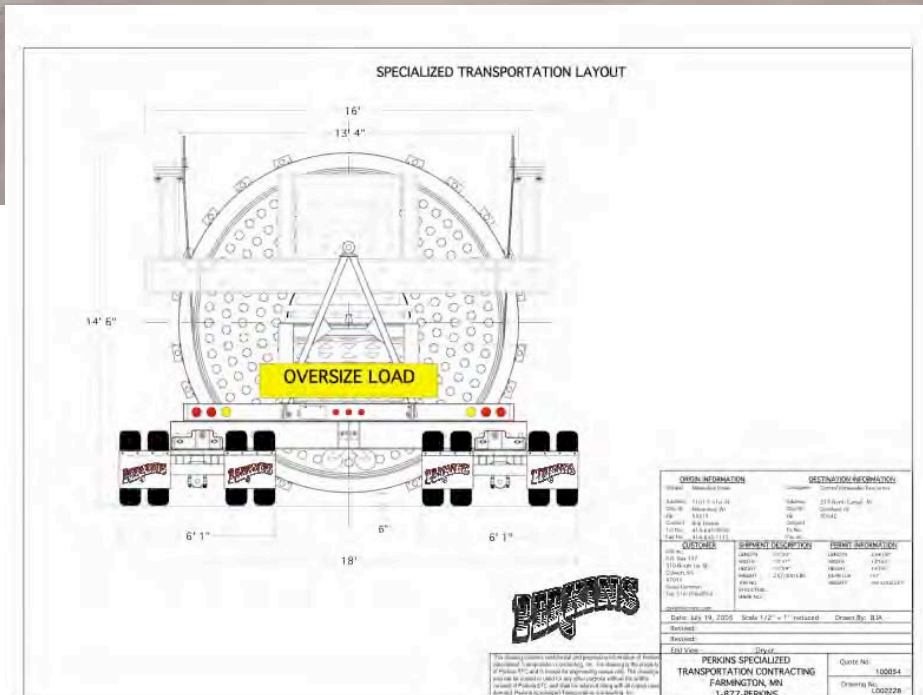
Highway Heavy Haul



1-877-PERKINS
www.perkinsonline.com



Moving 128 tons across 2 states with an 18' wide dual lane trailer requires plenty of police coordination and traffic control. But close quarters at the shop and jobsite added additional challenges for the Perkins team.



Perkins is best known for Dual Lane Loading transport equipment, which essentially occupies two traffic lanes while traveling and loads two lanes when crossing bridges—allowing much higher net weight components to be hauled than on conventional equipment. But not every state has the same requirements for Dual Lane Loading. For this project, Perkins used a unique feature on the transporter that yielded a 16' axle width in WI, which was quickly changed to 18' wide at the border for the IA leg of the trip.



Highway Heavy Haul

Another important feature of Perkins' transporter was the ability to self-load and unload using the hydraulic raise and lower features of the trailer.

Shown (lower right) resting on saddles at the shop, the Dryer has been attached by suspension cables to the transporter and is ready for lifting.

Shown (right) at jobsite, the Dryer is being readied for lower to grade by the Perkins' transporter. This feature saves the shop and site contractor considerable expense for handling by large cranes.



Perkins has been contracted to move from 6 to 12 of these large dryers. **Perkins Specialized Transportation Contracting** is located within 600 miles of most of the new Ethanol and BioDiesel plants in planning and construction.

Because of our specialized equipment, engineering capabilities and proximity to most Ethanol and BioDiesel plants, Perkins is the team to deliver...*when execution matters most.*